

Windows Millennium Edition

Nikon Capture 2 (Ver.2.0.2 Updater)

This manual is for those users of D1 series cameras who are running Windows Millennium Edition, and are updating to Nikon Capture 2 (Ver. 2.0.2)

For Windows Millennium Edition Users

Registering the Camera under Windows Millennium Edition (Me)

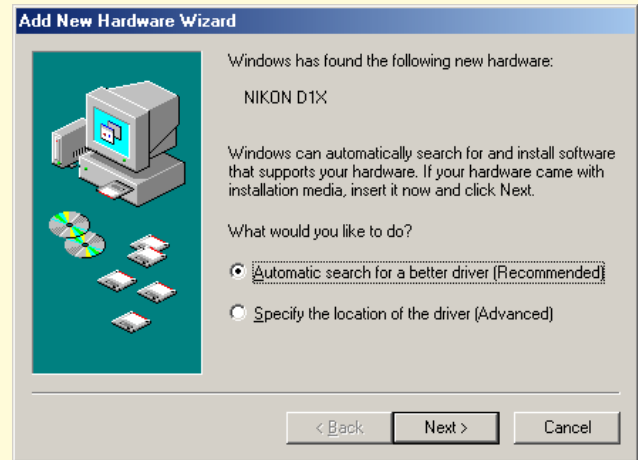
Before you will be able to use your D1, D1X, or D1H digital camera with Nikon Capture 2, you must complete the device registration procedure. If you have already registered the camera for use with Nikon View 4 or will not be connecting the camera to the computer, you will not need to register the camera now. See Nikon Capture User's Manual page 16 for further details.

Step 1

After installing Nikon Capture 2.0.2, turn the camera on, make sure that the mode dial is set to PC, and then connect the camera to the computer using an IEEE 1394 cable.

Step 2

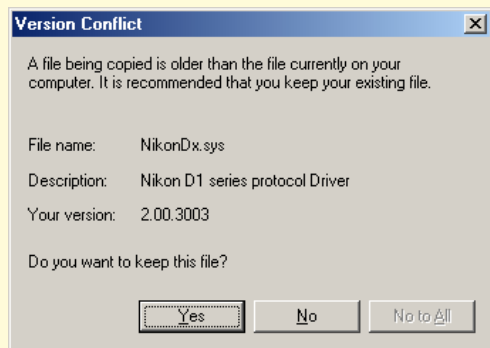
The opening dialog for the Add New Hardware Wizard will be displayed. Holding down the shift key to prevent the Welcome dialog from opening automatically, insert the Nikon Capture 2 CD into the CD-ROM drive and click Next after confirming that **Automatic search for a better driver (Recommended)** is displayed in the hardware wizard.



If the Welcome dialog appears when the CD inserted in the drive, close the dialog by clicking the **Quit** button.

Step 3

When the installation starts, the **Version Conflict** dialog box will appear. Make sure you click **Yes**.



The required system drivers were automatically installed when you updated Nikon Capture to version 2.0.2; this means that the required drivers are already present on the hard disk. Make sure you click **Yes** to use these drivers.

Step 4

When the installation of the drivers has finished, the dialog shown below will be displayed; click **Finish** to close the dialog box.



Step 5

Registration should now be complete; refer to page 18 of the Nikon Capture 2 manual (starting at Step 4) to check that the camera has been correctly registered with the system.